

## Lesson 9 Raspberry Pi File Transfer

With the tool of Winscp, you can transfer the Raspberry Pi files to the computer efficiently.

### 1. Winscp Installation

Please find and install the pack in the folder “5. Appendix/3. Tool/4. File Transfer Tool”.

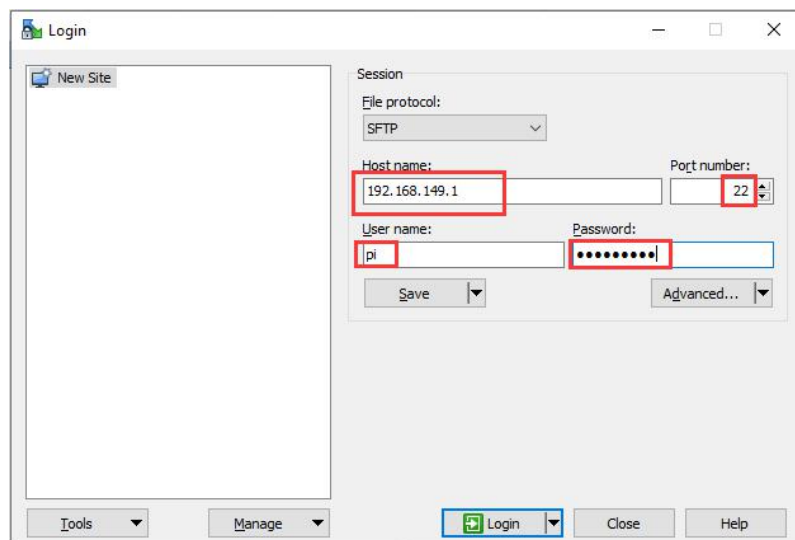
### 2. Import Files into Raspberry Pi

1) Turn on Raspberry Pi and open VNC.

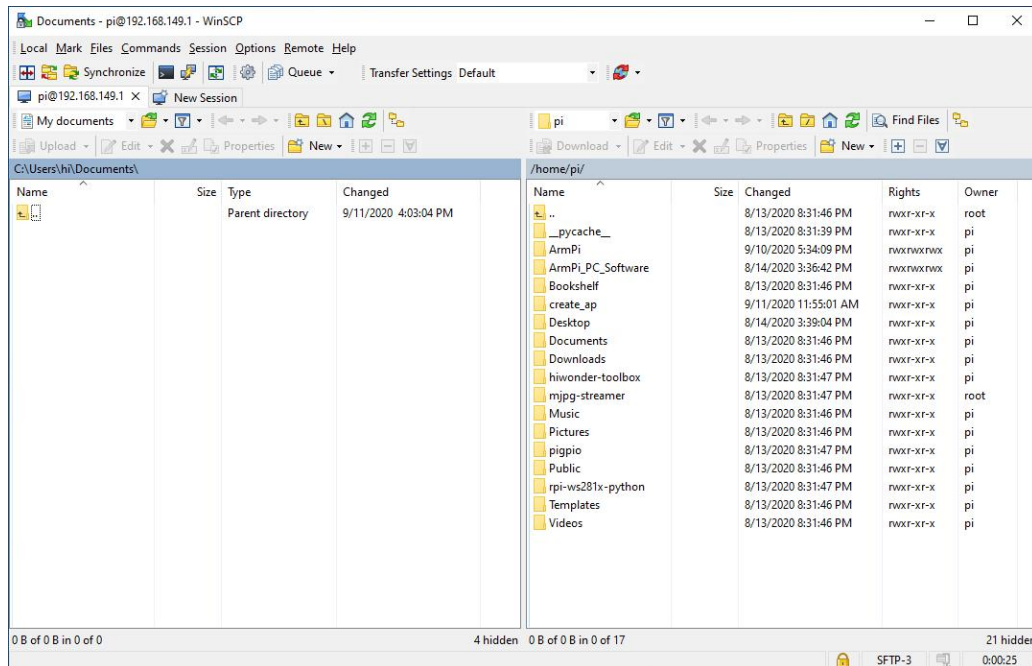
2) Open the installed Winscp.



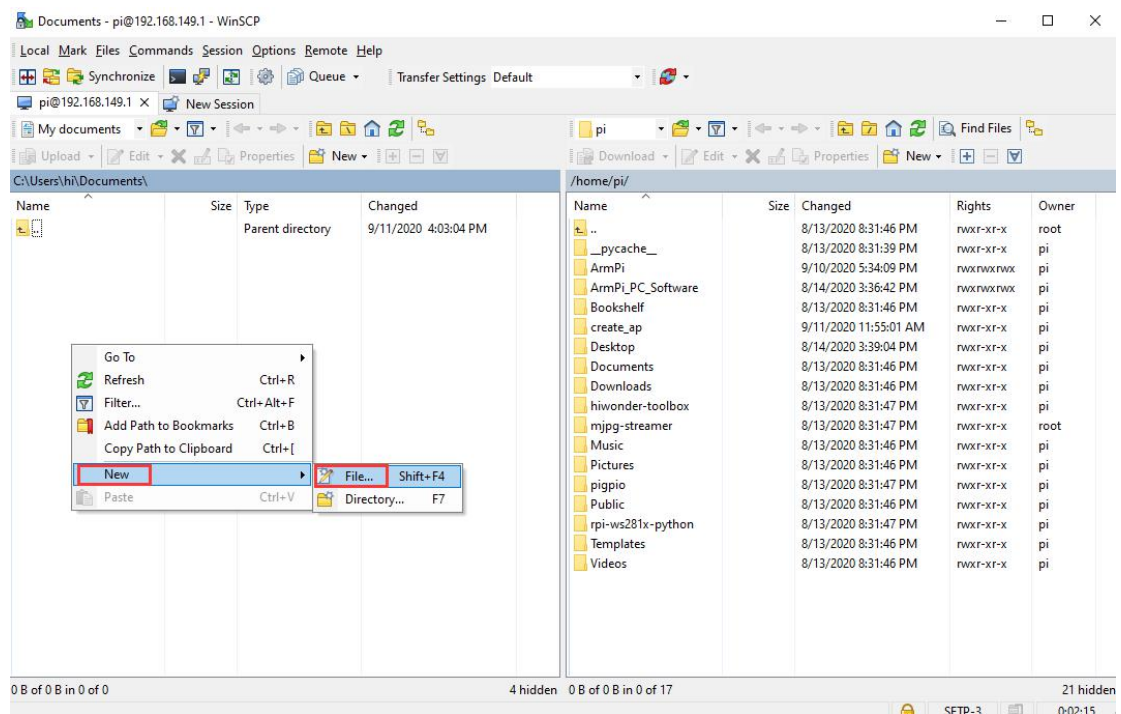
Winscp will display the following interface. Here will demonstrate with the Raspberry Pi not configured with Wi-Fi. (By default: host name is “192.168.149.1”, user name is “pi” and password is “raspberrypi”)

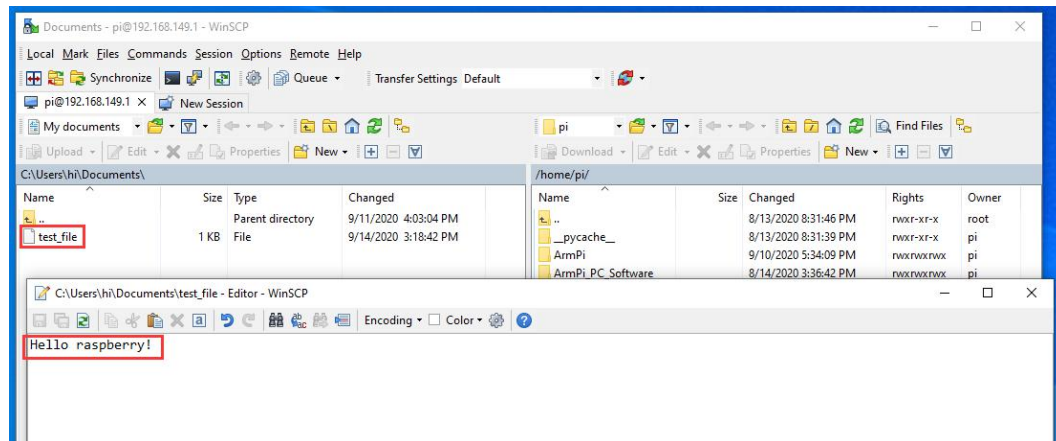


3) After connecting, the directory and file of Raspberry Pi will display on the right.

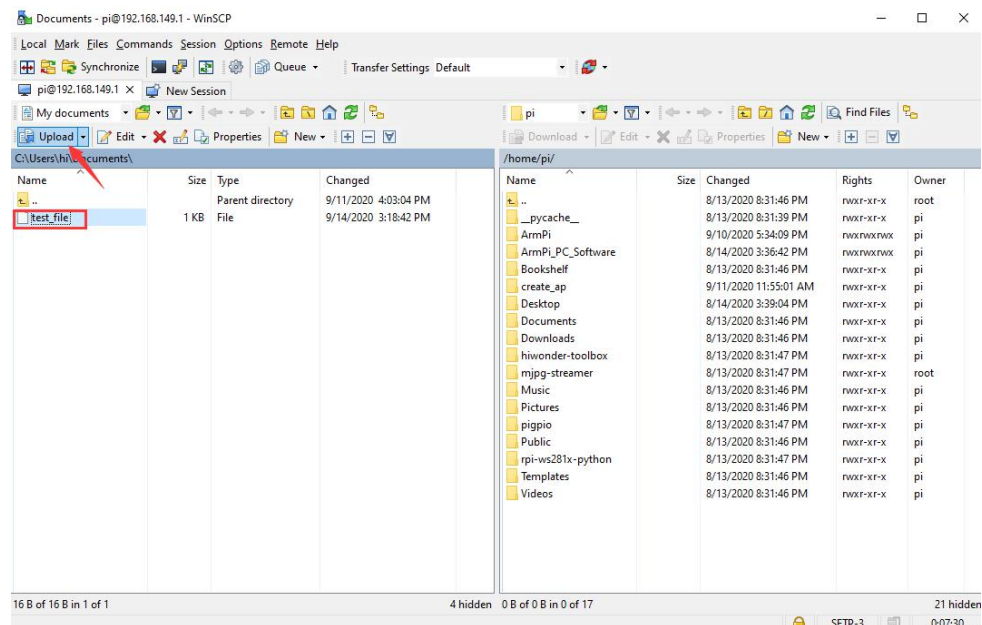


4) On the left side, please right-click “New” -> “File” to set up a file named as “test\_file”. Write the content as “Hello raspberry!” and save it.

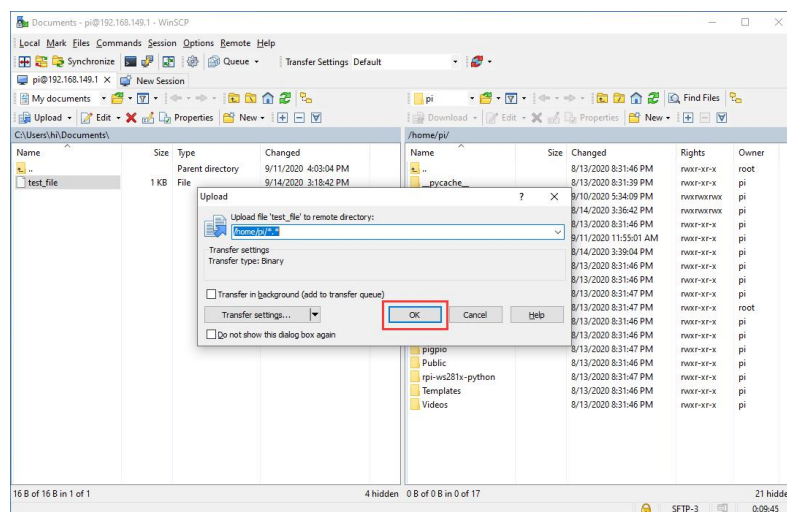




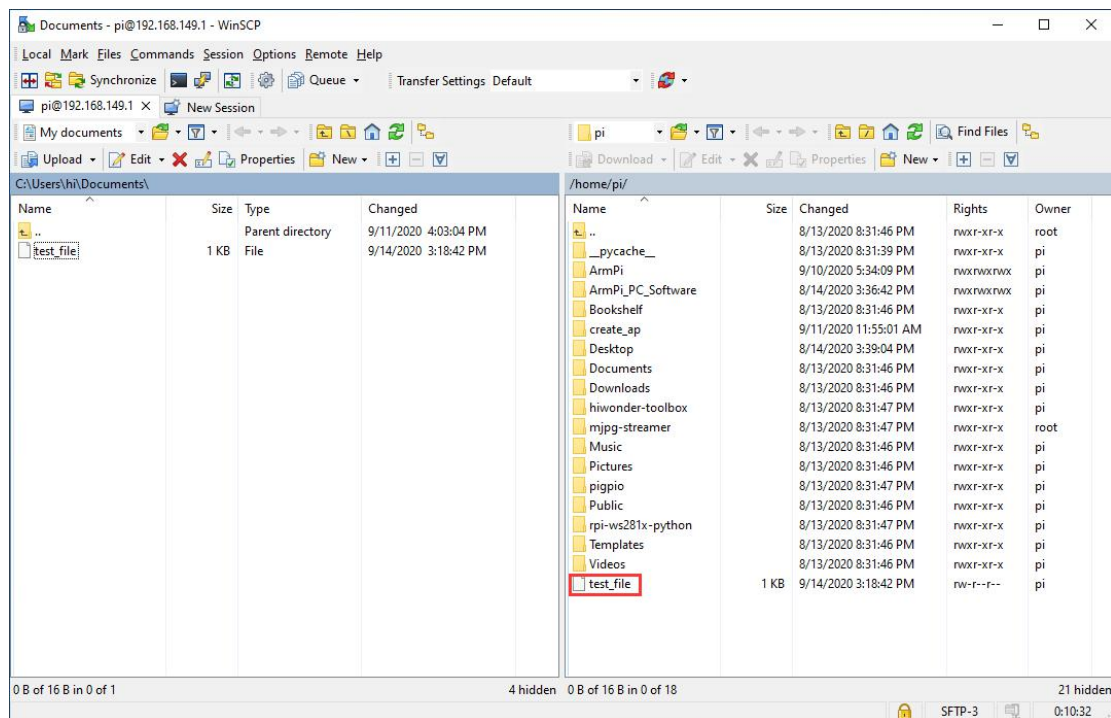
5) Choose the file and click “Upload”.



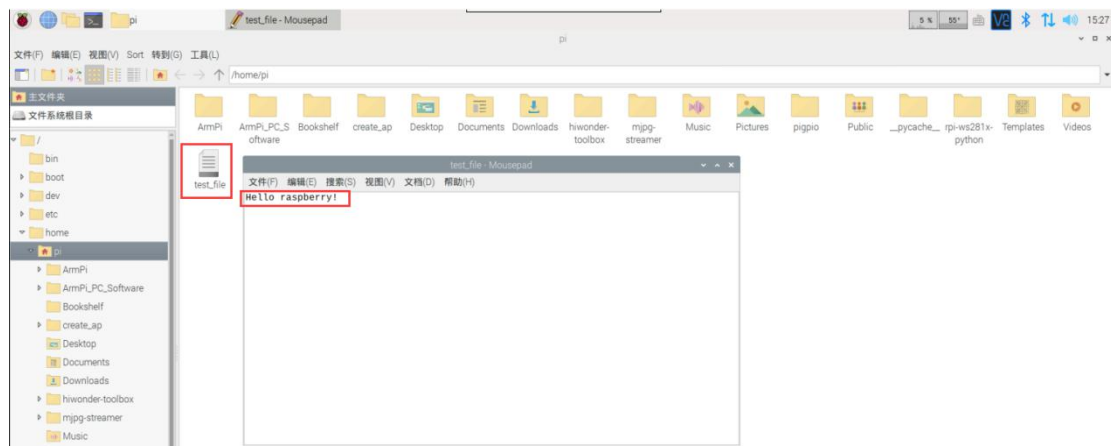
6) Select the path to be transferred and click “OK”.



7) The file is transferred successfully in the below figure.



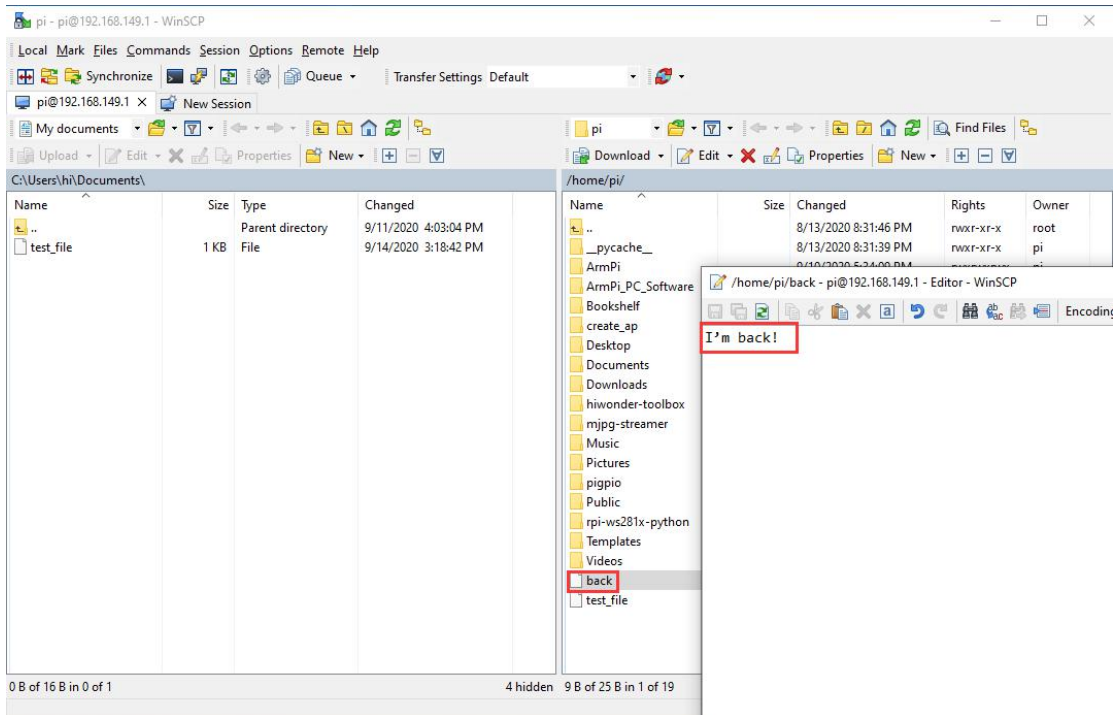
8) Opening with VNC, you will find that the file is in the Raspberry Pi.



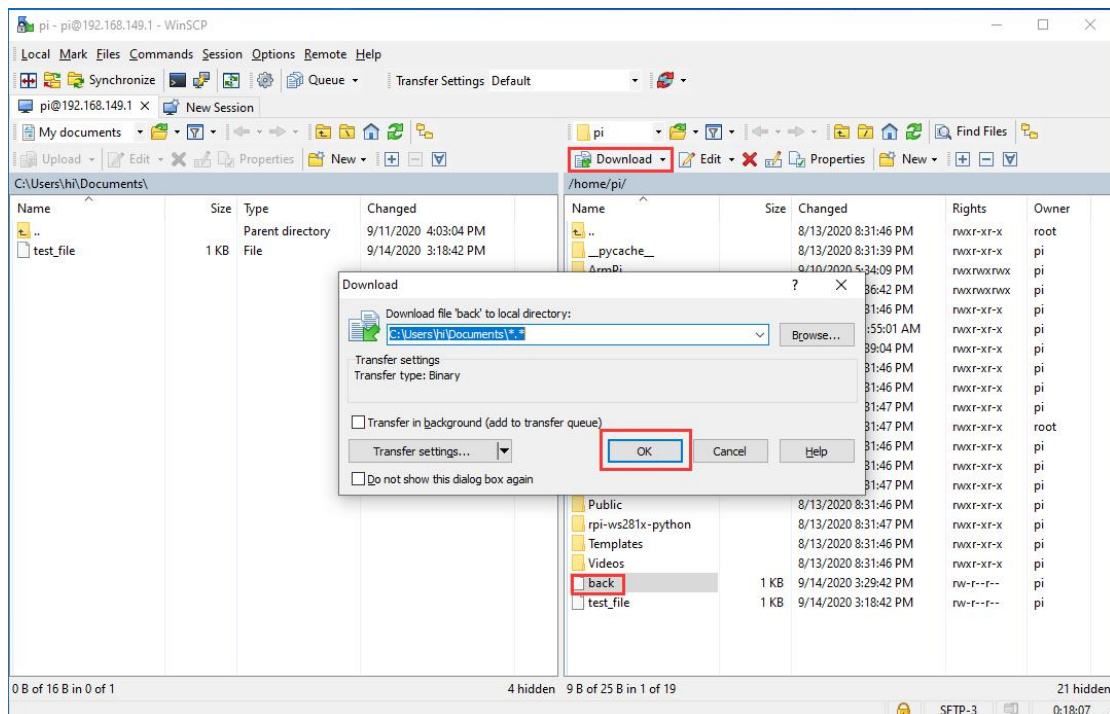
## 3. Export File from Raspberry Pi

1) Export Raspberry Pi files with the same method above.

2) On the right side, please right-click "New" -> "File" to set up a file named as "back". Write the content as "I'm back!" and save it.



3) Select the folder, click “Download” and choose the path to be uploaded. Place the files in “Documents” by default and then click “OK”.



4) Go to Documents and open the folder with “Notepad”. The content in the folder is the same as that on the Raspberry Pi. Then the transfer is finished.



